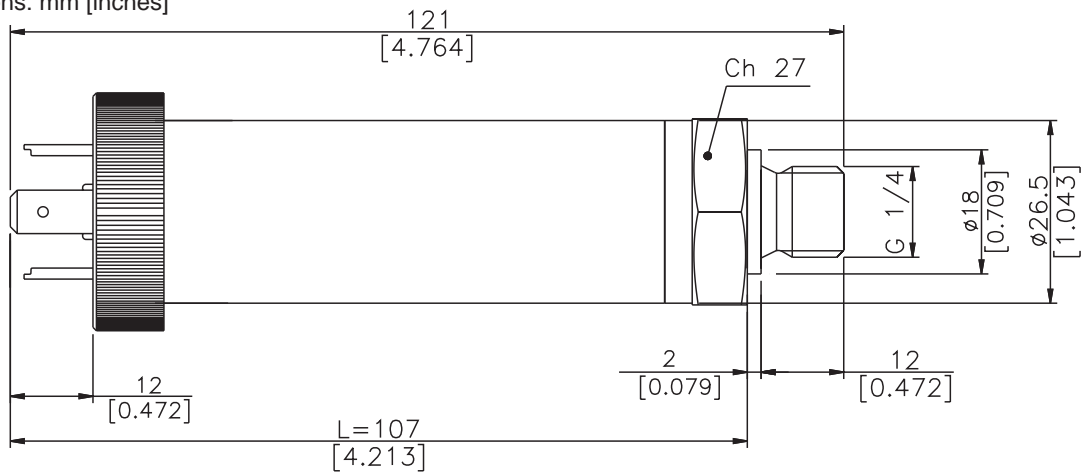




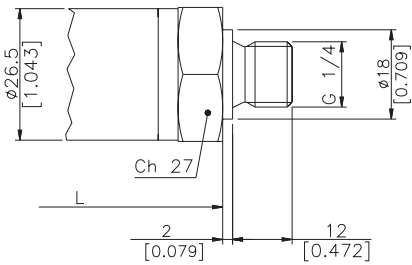
# INSTALLATION DRAWINGS

Dimensions: mm [inches]

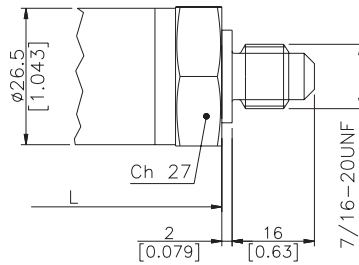


## PRESSURE CONNECTION

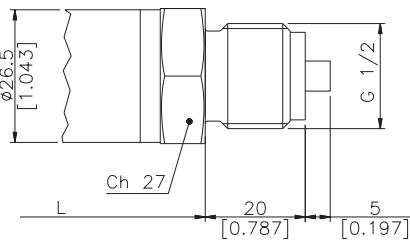
(1) G 1/4 MALE (DIN 3852-A)



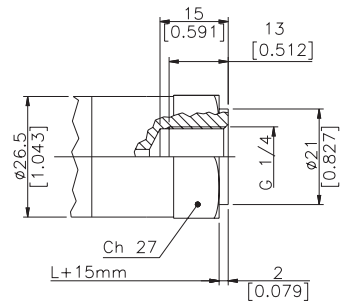
(2) SAE 04 AS4395-E



(3) G 1/2 A (DIN 16288)

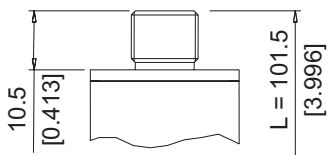


(4) G 1/4 FEMALE

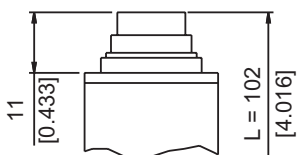


## ELECTRICAL CONNECTION

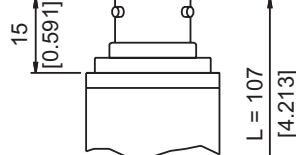
Z-4 pole connector  
M12x1



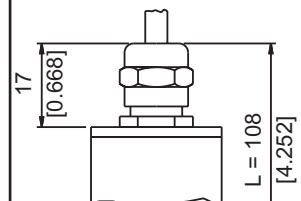
P-7 pole connector



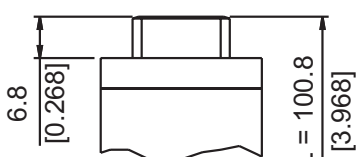
V-6 pole connector



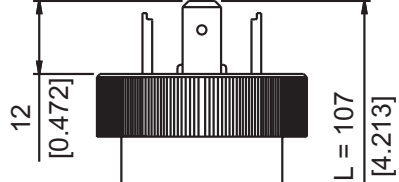
F-2 pole cable



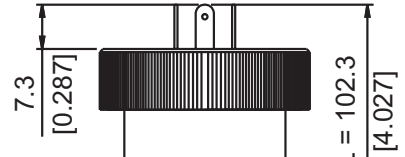
H-G4A1M 4 pole male connector



E-4 pole connector  
Solenoid



M-4 pole connector  
Microsolenoid



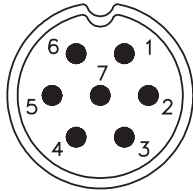
## INTRINSIC SAFETY CHARACTERISTICS

		II 1G Ex ia IIC T6	II 1G Ex ia IIC T5	II 1G Ex ia IIC T4
Maximum voltage	Ui	30Vdc	30Vdc	30Vdc
Maximum current	Ii	100mA	100mA	100mA
Maximum power	Pi	0.75W	0.75W	0.75W
Maximum inductance (*)	Li	0.25 mH	0.25 mH	0.25 mH
Maximum capacity (*)	Ci	26nF	26nF	26nF
Temperature of the fluid		-40...+60°C	-40...+70°C	-40...+80°C
Ambient temperature		-40...+60°C	-40...+70°C	-40...+80°C

(\*) includes inductance levels and capacity of a cable: (typical L 1μH/m and typical C 100 pF/m) with maximum length 15mt.

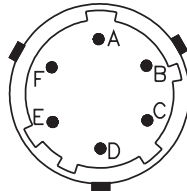
## ELECTRICAL CONNECTION - Connectors

### P - 7-pole connector



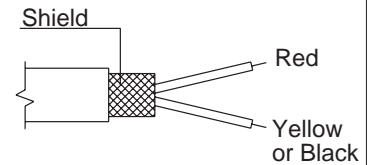
Male connector 09-127-09-07  
Protection IP67

### V - 6-pole connector



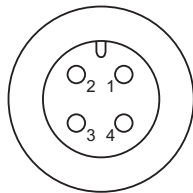
Male connector VPT02A10-6PT2  
Protection IP66

### F - 2 pole cable



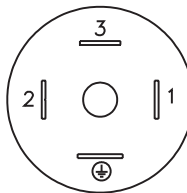
Shielded cable 2x0.25 - 2m.  
Protection IP65

### Z - 4 pole male connector M12 x 1



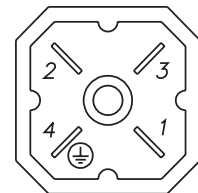
4 pole series 713 male connector  
Protection IP67

### E - 4 pole solenoid connector M - 4 pole microsolenoid connector



Solenoid DIN 43650A - ISO4400  
Protection IP65  
Microsolenoid DIN 43650C - ISO4400  
Protection IP65

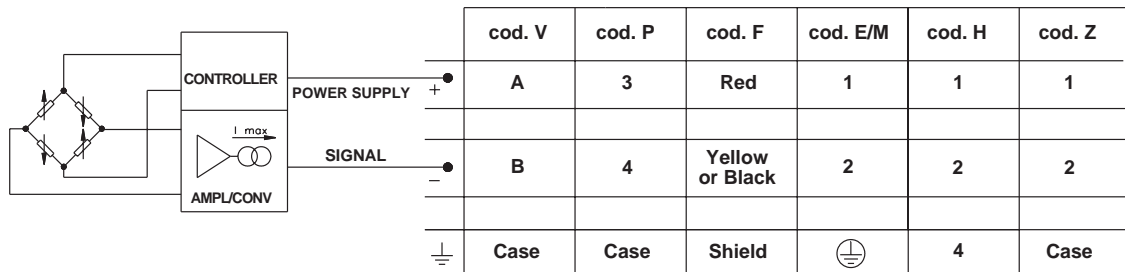
### H - 4-pole connector



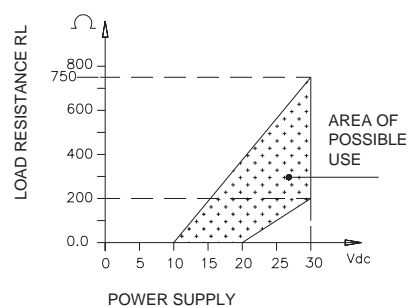
Male connector G4A1M  
Protection IP65

## ELECTRICAL CONNECTION - Connection diagrams

### CURRENT AMPLIFIED OUTPUT - mod. E



### LOAD DIAGRAM (Current output)



## ACCESSORIES ON REQUEST

### Connectors

#### Connection E

3 poles Connector + ground DIN43650A ISO4400  
Prot. IP65

#### Connection M

3 poles Connector + ground DIN43650C ISO4400  
Prot. IP65

#### Connection Z

4 pole female cable connector M12x1  
Prot. IP67

#### Connection V

4 pole female cable connector, 90° M12x1  
Prot. IP67

**CON 006**

#### Connection P

7 pole female cable connector  
Prot. IP67

**CON 008**

#### Connection P

7 pole female cable connector  
Prot. IP40

**CON 293**

#### Connection P

7 pole female cable connector, 90°  
Prot. IP40

**CON 050**

#### Connection V

6 pole female cable connector  
Prot. IP66

**CON 321**

**CON 320**

**CON 322**

**CON 300**

## ORDERING INFORMATION

Pressure transmitter

**XSA**

OUTPUT SIGNAL	
Standard	
4 .. 20 mA	<b>E</b>

PRESSURE CONNECTION	
Standard	
G 1/4 gas male	<b>1</b>
On request	
7/16-20UNF-2A male (SAE4 for AS4395-E)	<b>2</b>
G 1/2A (DIN 16288)	<b>3</b>
G 1/4 gas female	<b>4</b>

ELECTRICAL CONNECTIONS	
4-pole connector solenoid	<b>E</b>
Shielded cable	<b>F</b>
4 pole connector	<b>H</b>
4-pole connector microsolenoid	<b>M</b>
7 pole connector	<b>P</b>
6 pole connector	<b>V</b>
M12x1 - 4 pole connector	<b>Z</b>

**CALIBRATION STANDARDS**

Instruments manufactured by Gefran are calibrated against precision pressure calibration equipment which is traceable to International Standards.



#### GOST-R CERTIFICATION

XSA pressure transmitter is available with GOST-R certification.  
The request of this version must be specified on the order.

Ex.: **XSA - E - 1 - E - B03D - T - V - 4**

Intrinsically safe pressure transmitter, with 4 to 20mA signal output, G 1/4 male pressure connection, DIN43650A solenoid electrical connector, 0...30 bar measurement range, ± 0.15% FSO accuracy, 1msec response time, T4 temperature class (-40...+80°C).

Sensors are manufactured in compliance with:

- EMC 2004/108/CE compatibility directive
- RoHS 2002/95/CE directive
- ATEX 94/9/CE

Electrical installation requirements and Conformity certificate are available on our web site: [www.gefran.com](http://www.gefran.com)

Mechanical and/or electrical characteristics differing from standard may be arranged on request.

TEMPERATURE CLASS	
<b>4</b>	T4 (-40...+80°C)
<b>5</b>	T5 (-40...+70°C)
<b>6</b>	T6 (-40...+60°C)

RESPONSE TIME	
<b>V</b>	Fast (< 1msec)

ACCURACY	
<b>T</b>	± 0.15% FSO Typical

RANGE			
bar		psi	
<b>BV25</b>	0..0,25	<b>P05U</b>	0..05
<b>BV50</b>	0..0,5	<b>P15U</b>	0..15
<b>B01U</b>	0..1	<b>P03D</b>	0..30
<b>B02U</b>	0..2	<b>P05D</b>	0..50
<b>B2V5</b>	0..2,5	<b>P75U</b>	0..75
<b>B04U</b>	0..4	<b>P01C</b>	0..100
<b>B05U</b>	0..5	<b>P15D</b>	0..150
<b>B06U</b>	0..6	<b>P25D</b>	0..250
<b>B07U</b>	0..7	<b>P03C</b>	0..300
<b>B01D</b>	0..10	<b>P05C</b>	0..500
<b>B16U</b>	0..16	<b>P75D</b>	0..750
<b>B02D</b>	0..20	<b>P01M</b>	0..1000
<b>B25U</b>	0..25		
<b>B03D</b>	0..30		
<b>B04D</b>	0..40		
<b>B05D</b>	0..50		
<b>B06D</b>	0..60		

GEFRAN spa reserves the right to make any kind of design or functional modification at any moment without prior notice

GEFRAN spa

via Sebina, 74

25050 PROVAGLIO D'ISEO (BS) - ITALIA

tel. 0309888.1 - fax. 0309839063

Internet: <http://www.gefran.com>

**GEFRAN**

DTS\_XSA\_0709\_ENG