

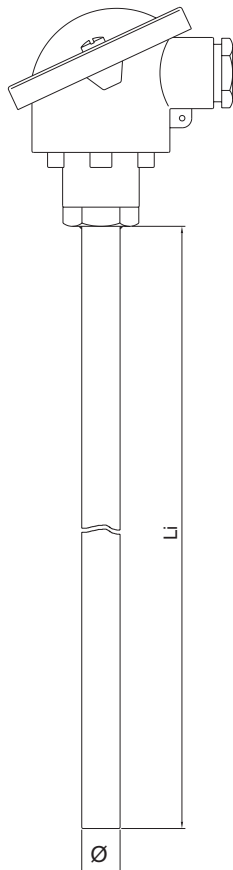


### Main features

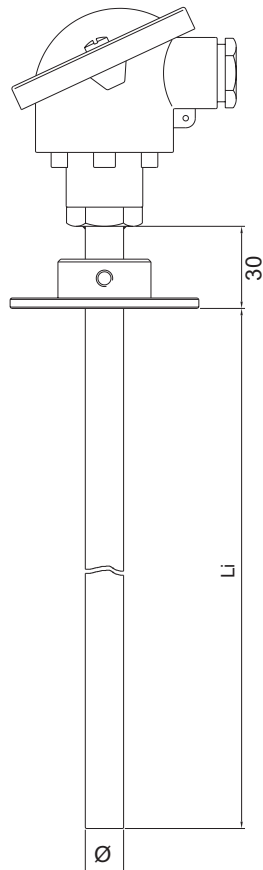
- Temperature limits:
  - 40 ... + 750° C for type J
  - 40 ... + 900° C for type E
  - 40 ... + 1000° C for type K
 (see table for sheath diameters)
- Tolerance (IEC standard 584.2/Class 2):
  - $\pm 2.5^{\circ} \text{C}$  (- 40 ... + 333° C)
  - $\pm 0.0075 [t]$  (t > + 333° C)
- Ceramic insulation of the thermocouple element
- Application versatility

### MODELS

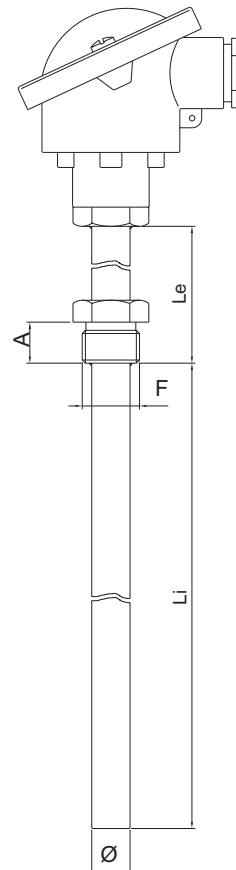
**TC8 A**  
without fitting



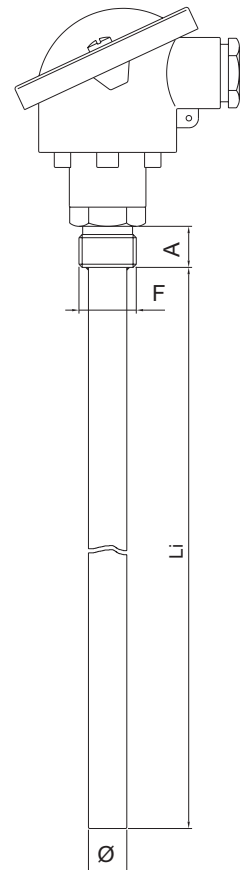
**TC8 B**  
with adjustable flange



**TC8 C**  
with welded fitting



**TC8 D**  
with welded fitting  
under the head



# ORDER CODE

**CODE** T C 8 [ ][ ][ ][ ][ ][ ][ ][ ][ ][ ][ ] 0 [ ][ ][ ][ ] X [ ][ ][ ][ ] X [ ][ ][ ][ ][ ][ ][ ][ ] X [ ]

Model	
Without fitting	A
With adjustable flange	B
With welded fitting	C
With welded fitting under the head	D

Element + Hot Junction	
Single Insulated	1
Single Grounded	2
Double Insulated	3
Double Grounded	4

Thermocouple Type	
Fe - Cu/Ni	J
Ni/Cr - Ni/Al	K
Ni/Cr - Cu/Ni	E

Connection Head	
DIN B	C
DIN A	D
DIN BUS	E
EEX d IIC 2GD	F
CEAA	H

Sheath Material	
AISI 304	A
AISI 310	B
AISI 316	C
INCONEL 600	F

Sheath Diameter (mm)	
16	O
17.2 (3/8")	P
21.3 (1/2")	Q
26.7 (3/4")	T

Connection Thread *		
1/2" GAS	"A"= 15mm	D
3/4" GAS	"A"= 18mm	E
1" GAS	"A"= 18mm	F
1/2" NPT		J
3/4" NPT		K
1" NPT		L

(\*) To be shown for C and D models only

Conn. / Flange Material	
300 series stainless steel	2 *
Aluminium	4 **
Carbon steel	5 **

(\*) For fittings only  
(\*\*) For flanges only

Certificates	
A	Conformity Report
R	Calibration Report
T	SIT Certificate

**LENGTHS AND ACCESSORIES**

Li = Immersion Length (mm)	
Standard length from 200 to 2000mm with 50mm step	

Le = Extension Length (mm) (*)	
Standard length from 10 to 200mm with 10mm step	

(\*) To be shown for TC8C model only

C

D

E

F

H

4  
 Ø69  
 Ø34  
 14

5  
 Ø75  
 Ø45  
 10/10

	Mod. C - D	Availability of Mounts /Sheathing Diameter				
MOUNT (F)	A (mm)	Mount (F)	Ø16	Ø17.2	Ø21.3	Ø26.7
G 1/2	15	G 1/2	x	-	-	-
G 3/4	18	G 3/4	x	x	x	-
G 1	20	G 1	x	x	x	x
1/2 NPT	20	1/2 NPT	x	-	-	-
3/4 NPT	20	3/4 NPT	x	x	x	x
1 NPT	25	1 NPT	x	x	x	x

GEFRAN spa reserves the right to make any kind of design or functional modification at any moment without prior notice

**GEFRAN spa**  
 via Sebina, 74  
 25050 PROVAGLIO D'ISEO (BS) - ITALIA  
 ph. 0309888.1 - fax. 0309839063  
 Internet: <http://www.gefran.com>  
[www.gefranonline.com](http://www.gefranonline.com)

**GEFRAN**

DTS\_TC8\_0607\_ENG